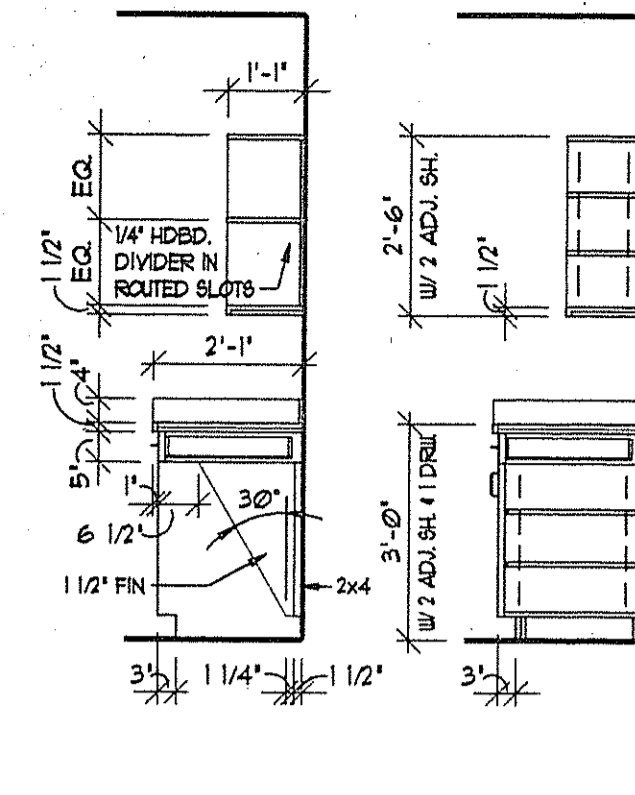
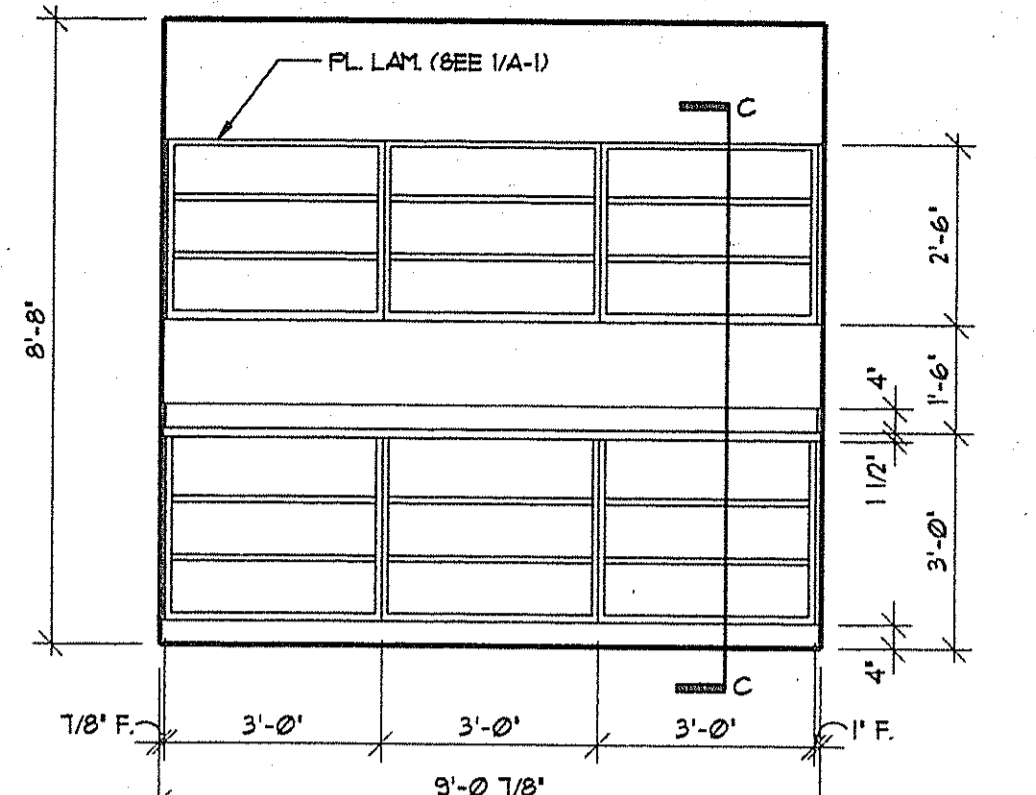


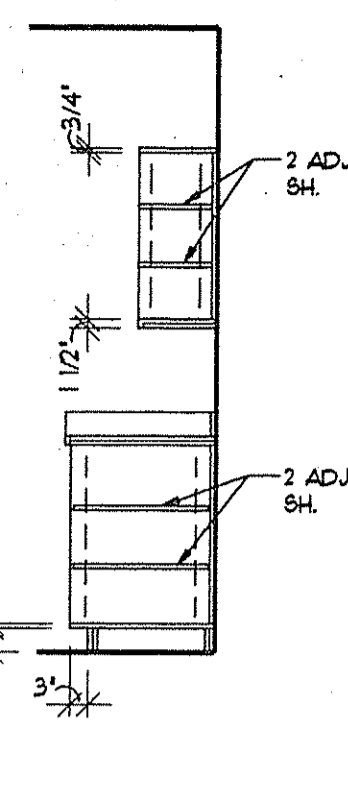
**1 ELEVATION** (MAIL ROOM 106)  
3/8" = 1'-0"



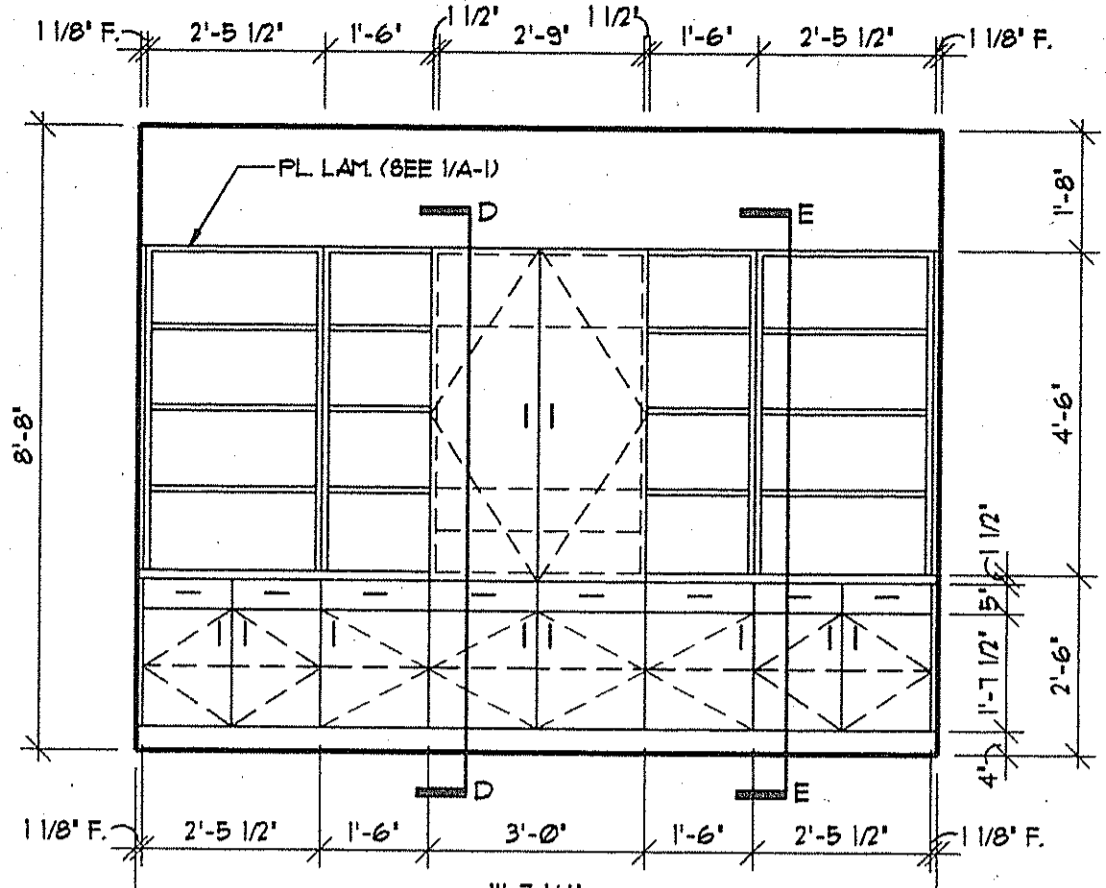
**AA BB**



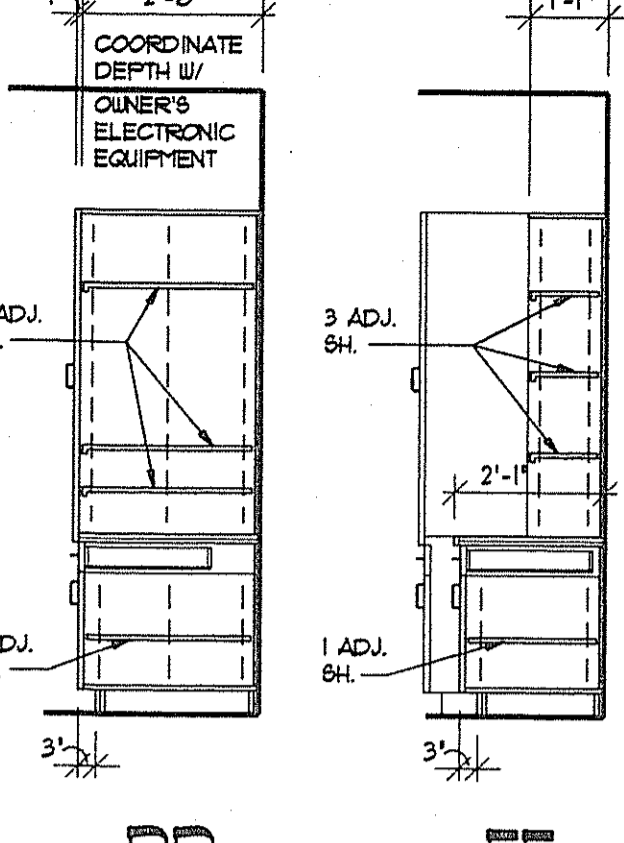
**2 ELEVATION** (COPY & STORAGE ROOM 128)  
3/8" = 1'-0"



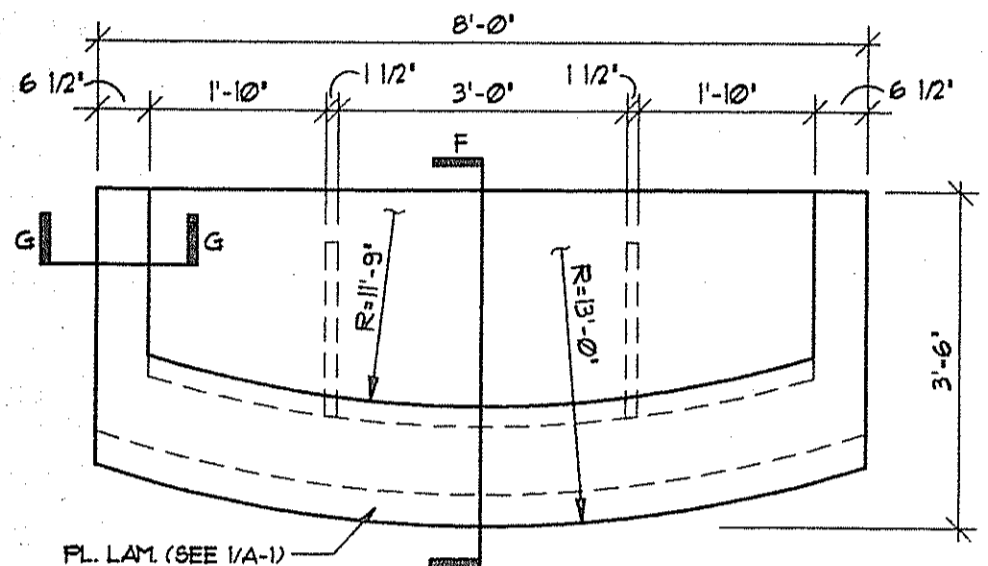
**CC**



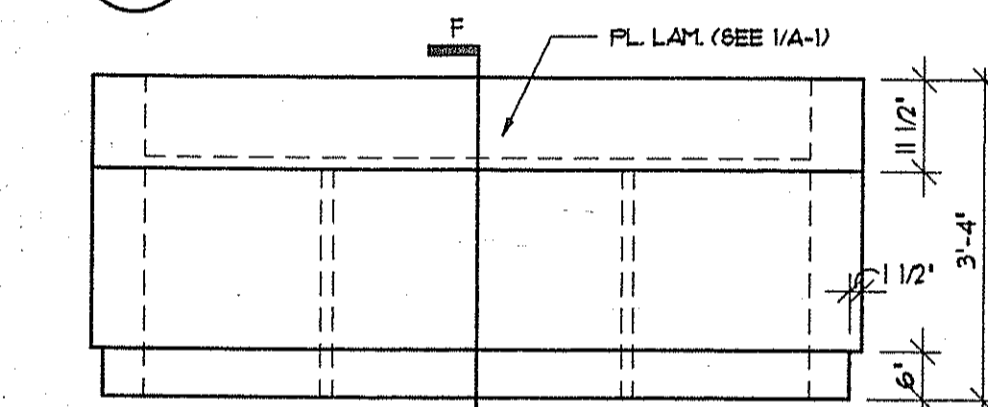
**3 ELEVATION** (DIRECTORS LOUNGE 126)  
3/8" = 1'-0"



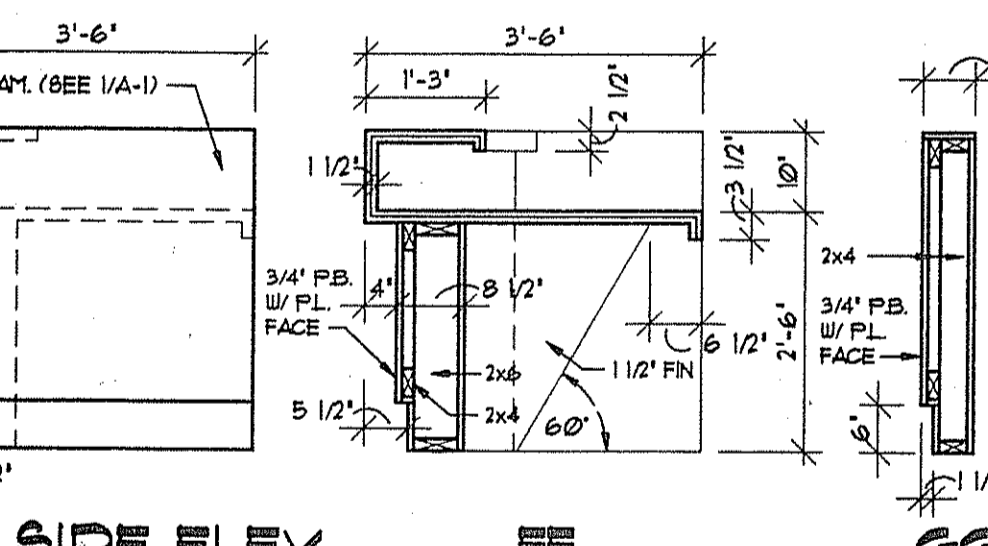
**DD EE**



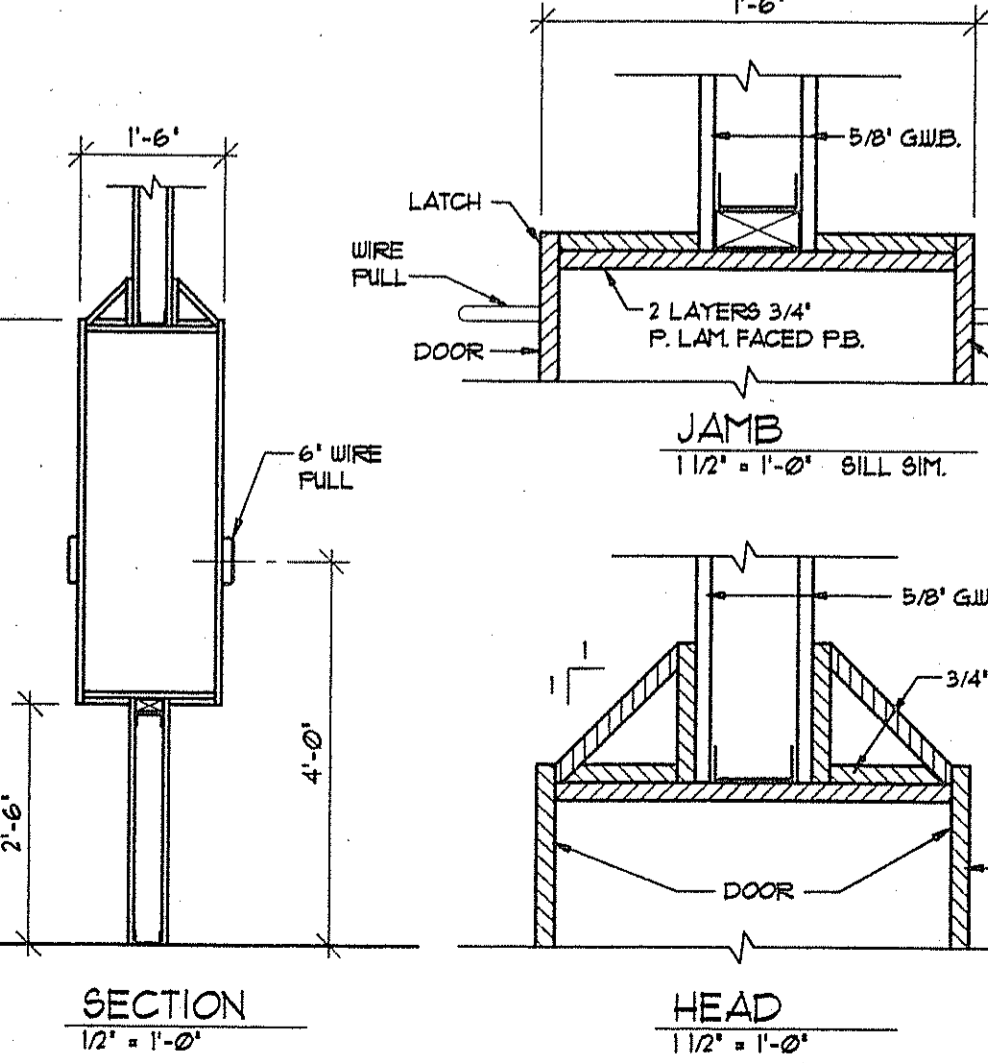
**4 PLAN** (RECEPTION DESK 135)  
1/2" = 1'-0"



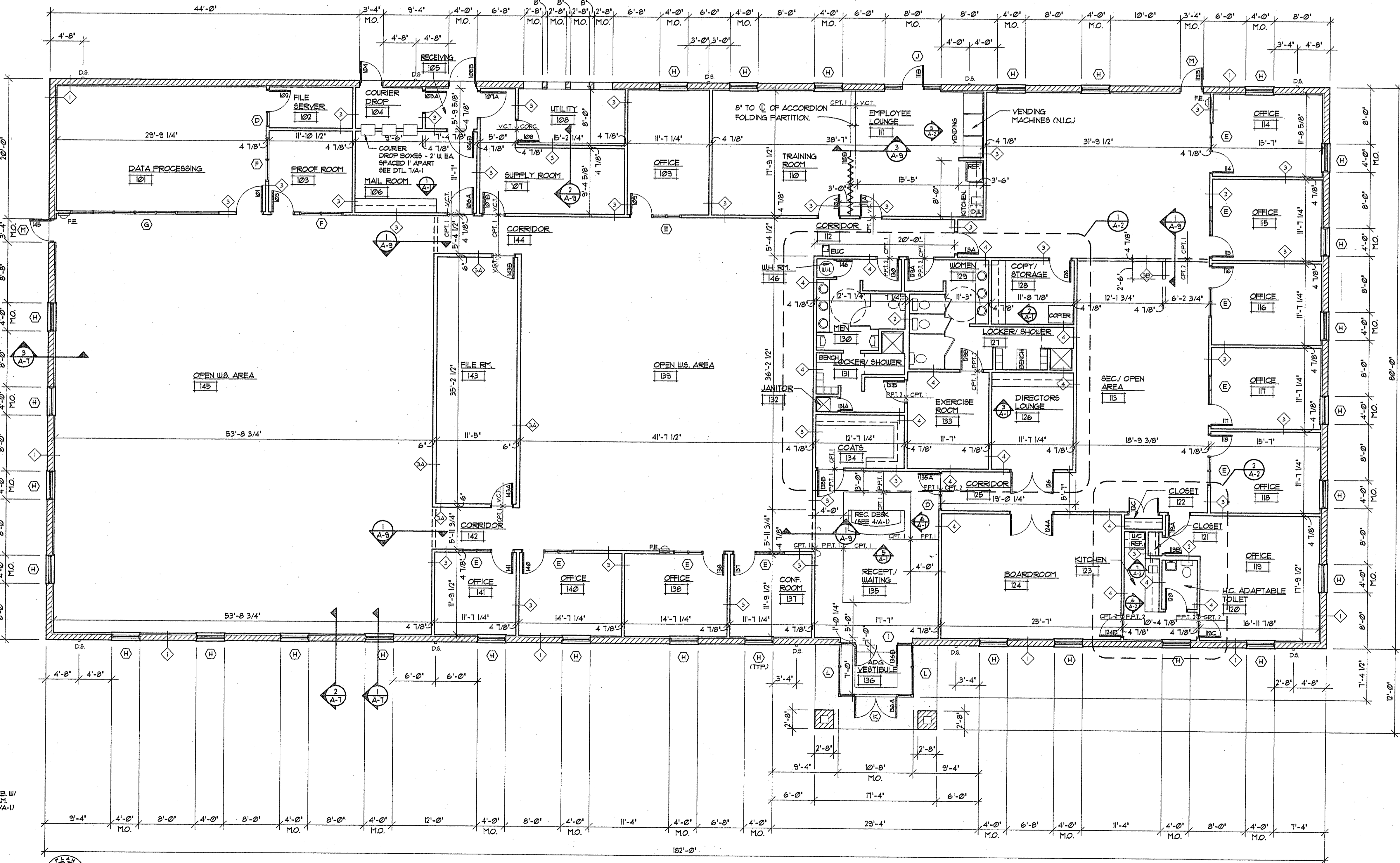
**5 FRONT ELEVATION** (RECEPTION DESK 135)  
1/2" = 1'-0"



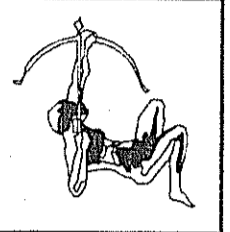
**6 SIDE ELEV.** (RECEPT. DESK 135)  
1/2" = 1'-0"



**7 COURIER DROP BOX** (TYP. OF 3)  
1/2" = 1'-0" (NOTE: EA. DOOR HINGES ON SOUTH SIDE OF BOX)



**FLOOR PLAN**  
1/8" = 1'-0" (NOTE: FE = FIRE EXTINGUISHER WITH CABINET.)



CONTRACT NO.: 94007

SCALE: AS NOTED

DATE: 10-27-95

DATE PRINTED:

DRAWN BY: MJS, JGO

CK: JAB

REVISIONS

1	CASEWORK 11-10-95 AF2-1
---	----------------------------

**Mainline Bancorp, Inc.  
Main Operations Center**  
CAMBRIA COUNTY INDUSTRIAL PARK  
INDUSTRIAL PARK RD.  
CAMBRIA TOWNSHIP, PA