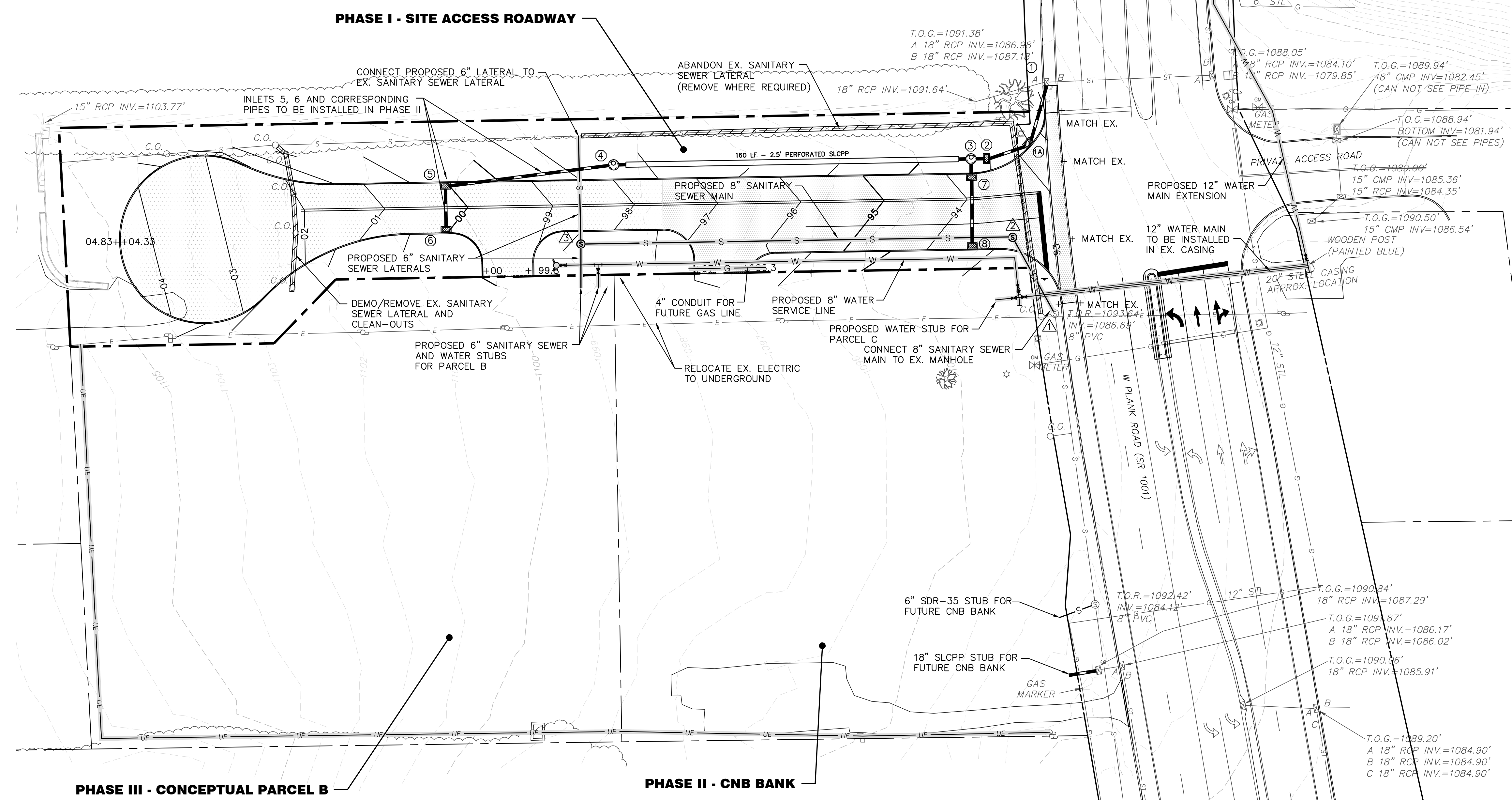
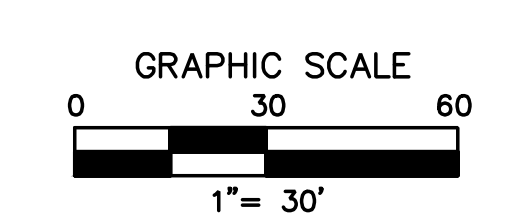


LEGEND

	RIGHT-OF-WAY LINE
	PROPERTY LINE
	SETBACK LINE
	ADJOINING PROPERTY LINE
	CONTOURS
	STORM DRAIN
	INLET
	WATER LINE
	FIRE HYDRANT
	SANITARY SEWER LINE
	SANITARY SEWER MANHOLE
	NATURAL GAS LINE
	ELECTRIC & TELEPHONE
	UTILITY POLE
	LIGHTS
	SIGN
	TREES/SHRUBS
	CONTOURS
	6" CONCRETE CURB
	CONCRETE CENTER MEDIAN
	PHASE I - BITUMINOUS PAVEMENT
	PHASE II - BITUMINOUS PAVEMENT
	SANITARY SEWER LATERAL
	SANITARY SEWER MANHOLE
	WATER LINE
	CONDUIT FOR NATURAL GAS LINE
	FIRE HYDRANT W/ VALVE
	STORM DRAIN
	STORM INLET
	STORM MANHOLE
	REALIGNED OVERHEAD ELECTRIC LINE
	UNDERGROUND ELECTRIC
	UTILITY POLE



- ### NOTES
1. PARCELS HAVE A 15' UTILITY EASEMENT ALONG ALL PROPERTY LINES.
 2. ALL UTILITIES WITH THE EXCEPTION OF INLETS 5, 6 AND CORRESPONDING PIPES SHALL BE INSTALLED IN PHASE I.
 3. ALL SANITARY SEWER MATERIALS AND CONSTRUCTION SHALL COMPLY WITH THE ALLEGHENY TOWNSHIP SEWER AND WATER AUTHORITY GENERAL SPECIFICATIONS FOR SANITARY SEWER INSTALLATION AND RULES AND REGULATIONS. TOWNSHIP SEWER INSPECTOR FRED BAKER SHALL BE CONTACTED TO SCHEDULE INSPECTION AT 814-329-7878.



Date	Revisions	No.
3/28/16	REVISED AS PER BCDD	4
4/07/16	REVISED AS PER PENNDOT	5
5/19/16	REVISED AS PER BCDD	6
6/01/16	REVISED CONSTRUCTION SET	7

Scale AS SHOWN
Date 03/25/2016
Drawn By NDS
Checked By BEC
Project No. 0180-15-233
File No. 0180-15-233

THE EADS GROUP
 ENGINEERING ARCHITECTURE AND DESIGN SERVICES

1126 8TH AVENUE
 ALTOONA, PA 16602
 ALTOONA, PA
 JOHNSTOWN, PA
 PITTSBURGH, PA
 SOMERSET, PA
 CUMBERLAND, MD.

Phone: 814-944-5035
 Fax: 814-944-4862
 www.eadsgroup.com

CONVENTION POINT SUBDIVISION
SITE ACCESS ROADWAY
 FOR
CONVENTION POINT, LLC.
 ALLEGHENY TOWNSHIP, BLAIR COUNTY, PA
GRADING AND UTILITY PLAN

Drawing No.
C-4