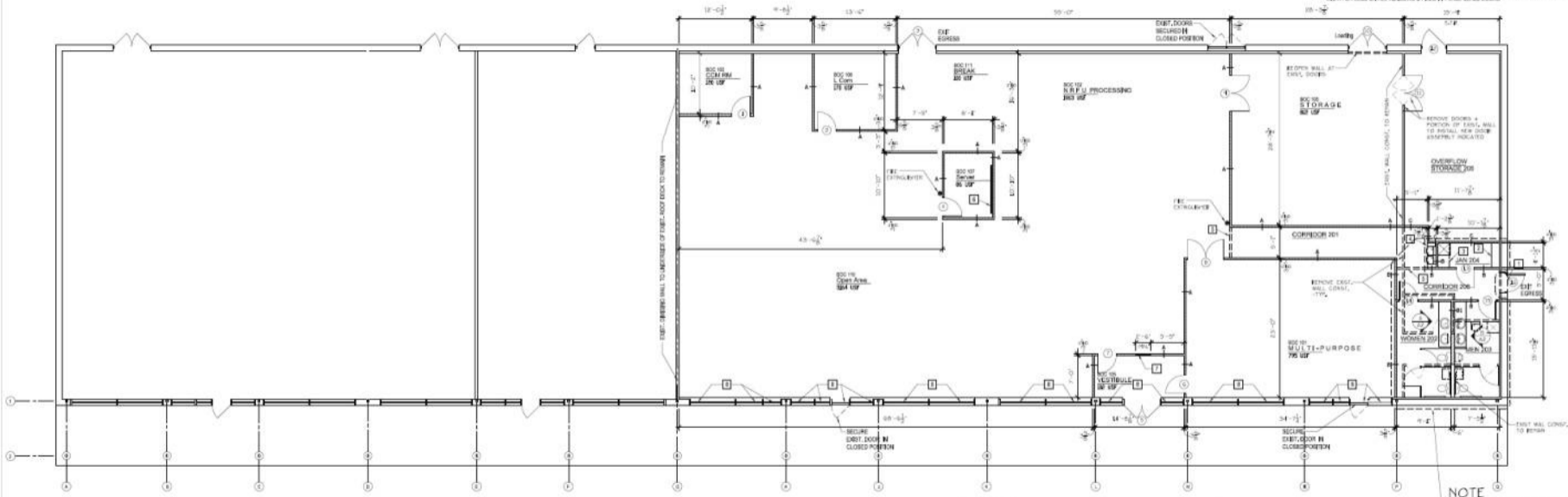


1 PROVIDE A MINIMUM OF 3/4" x 3/4" TELLERS FINISH OF 1/2" LAMINATED GLASS COMPLETE W/ PASS-THRU TRAY OR DRAWER BELOW

2 PROVIDE ALUM. OR PLASTIC VERTICAL BLINDS OR HORIZONTAL BLINDS W/ ALUM. SLATS OF 1" WIDTH OR LESS ON ALL WINDOWS & FINISH W/ CR2 GLASS DOORS



NOTE
ALL WORK THIS AREA TO BE INSTALLED AS