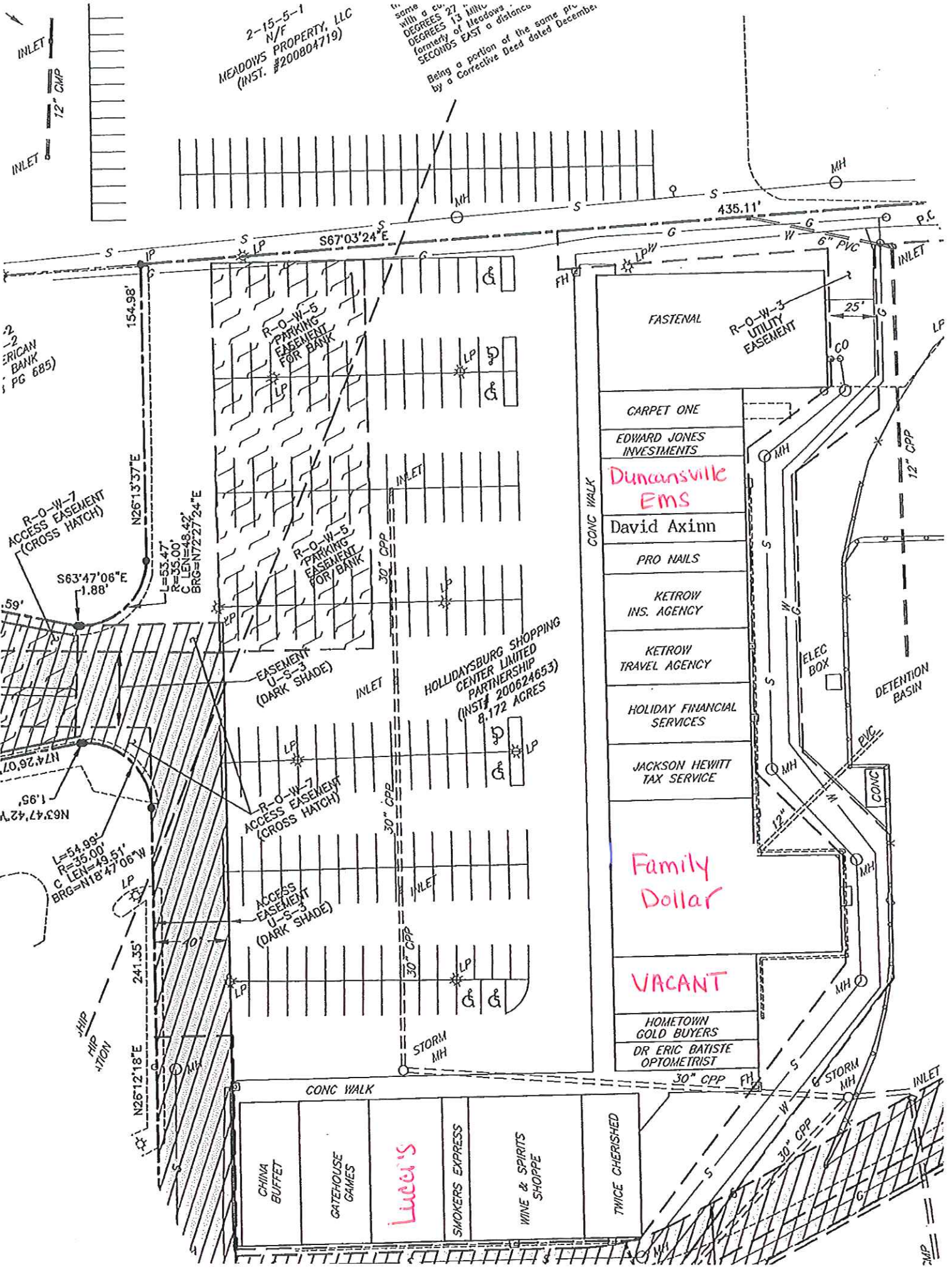


2-15-5-1
N/F
MEADOWS PROPERTY, LLC
(INST. #200804719)

to same with a CO. DEGREES 27. DEGREES 13 MIN. FORMERLY OF MEADOWS. SECONDS EAST a distance Being a portion of the same pr. by a Corrective Deed dated December



2
2
ERICAN
BANK
PG 685)

R-O-W-7
ACCESS EASEMENT
(CROSS HATCH)

R-O-W-5
PARKING
EASEMENT
FOR BANK

R-O-W-5
PARKING
EASEMENT
FOR BANK

EASEMENT
U-S-3
(DARK SHADE)

HOLIDAYSBURG SHOPPING
CENTER LIMITED
PARTNERSHIP
(INST# 200624653)
8.172 ACRES

R-O-W-7
ACCESS EASEMENT
(CROSS HATCH)

ACCESS
EASEMENT
U-S-3
(DARK SHADE)

L=54.99'
R=35.00'
C LEN=49.51'
BRG=N18°47'06"W

1/2 HIP
HIP
1/2 TION

CHINA
BUFFET

GATEHOUSE
GAMES

Lucci's

SMOKERS
EXPRESS

WINE & SPIRITS
SHOPPE

THICE
CHERISHED

VACANT

Family
Dollar

David Axim

Duncansville
EMS

EDWARD JONES
INVESTMENTS

FASTENAL